

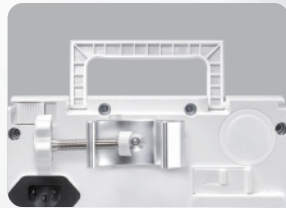
As simple as it is precise

HK-400III Syringe Pump

- Compact and light weight design allow easy moving and transferring.
- Automatically identifies various syringe types and sizes from 5ml to 60ml.
- Numeric and graphic pressure indicator helps caregivers identify occlusion in advance to prevent potential risks.
- 12 infusion modes fully meet the needs from various clinical departments and special drugs.
- More than 50000 history records.
- Ingress protection by IP44.



Numeric keys combines button design facilitates fast programming.



Hidden handle design helps to save space.



Caregivers can easily install or remove pumps thanks to the integrated handle and rotatable pole clamp.



Night mode provides better rest for patients by muting the key sound and reducing screen brightness.



Pumps stack and lock together and can be expanded from 2 to 12 pumps.



With audible and visual alarm, caregivers can easily locate the alarm and warning.

Model	HK-400III
Infusion Mode	Rate mode, Time mode, Weight mode, Intermittent mode, TPN mode, Drug library, Program mode, TIVA mode, Shift mode, Dose mode, Loading Dose Mode, Micro Mode
Applicable infusion set	Various brands of sterile syringes: 2ml, 5ml, 10ml, 20ml, 30ml, 50ml/60ml
Accuracy	±2%
Infusion rate	2ml syringe: 0.1-150 ml/h 5ml syringe: 0.1-150 ml/h 10ml syringe: 0.1-300 ml/h 20ml syringe: 0.1-600 ml/h 30ml syringe: 0.1-900 ml/h 50ml(60ml) syringe: 0.1-1800 ml/h
VTBI	(0-9999.99)ml
Volume infused	0-36000 ml
KVO rate	0.1-10 ml/h, increment: 0.1ml/h
BOLUS rate	2ml syringe: 0.1-150 ml/h 5ml syringe: 0.1-150 ml/h 10ml syringe: 0.1-300 ml/h 20ml syringe: 0.1-600 ml/h 30ml syringe: 0.1-900 ml/h 50ml(60ml) syringe: 0.1-1800 ml/h
Occlusion pressure	13 levels
History record	50000
Alarm	Handle off, Syringe off, Empty, Occlusion, Battery exhaust, Low Battery, Near empty, Almost Done (infusion near over), Finished, Use Battery, AC fail, No Operate
Features	With KVO, bolus, Anti-reverse detection, Double CPU, Key lock
Optional function	Nurse call, Wifi function, Dedicated syringe
Waterproof	IP44
Power consumption	35VA
Size	240 * 135 * 138 mm (length x width x height)
Net weight	1.8KG
AC power	100-240V, 50/60Hz
Battery	DC7.2V (Rechargeable lithium polymer battery, 2550mAh or 2550mAh×2) 8h at 5ml/h(1 battery) 16h at 5ml/h(2 batteries)
Operating conditions	Environment temperature 5°C~40°C Relative humidity: 10-95% (no frosting) Air pressure: 86kPa~106kPa

hawkmed



Shenzhen Hawk Medical Instrument Co., Ltd.

+86 0755-83151901 | szhk@hawkmedical.cn

www.hawkmed.com.cn

Add: 1st-4th Floor, Building C, Jianyetai Industrial Zone, No.11 Minhuan Road, Fukang Community, Longhua Street, Longhua District, Shenzhen, Guangdong, P.R. China

