

  
diamedica

**ECO2** spare parts



Category	Part name	Page	Category	Part name	Page
<b>Patient Circuit</b>	0.5 litre reservoir bag	3	<b>Vaporiser</b>	Mini funnel for vaporiser	5
	1 litre reservoir bag	3		Vapouriser service kit	5
	2 litre reservoir bag	3	<b>UPS</b>	Replacement UPS	5
	30mm blue tubing 3m length	3		Replacement batteries for the UPS	5
	Straight connector 22F - 15M	3		Replacement UPS mains cable UK plug	6
	Ayres T Piece paediatric circuit	3		Replacement UPS mains lead EU plug	6
	Adult mask	3	<b>General spares</b>	Water trap	6
	Paediatric Mask	3		Battery charger	6
	Adult patient circuit (2 x tubes and Y piece)	3		6mm clear length tubing 1m	6
	Paediatric patient circuit (2 x tubes and Y piece)	3		6mm black length tubing 1m	6
	Straight Connector 22M x 22M	3		Silicon tube 0.6m	6
	Tee Connector 22M x 22M x 22F	3		Inspiratory valve	6
	One Way Valve 22M x 22F	3		Over pressure valve	6
	Tube and mask Oxygen set	3		Air regulator	6
	Adult Y piece for circuit	4		External Air regulator	6
	Paediatric Y piece for circuit	4		Air flowmeter	6
	Paediatric self-inflating bag	4		Oxygen flowmeter	6
	Adult self-inflating bag	4		Flowmeter Flow regulator	6
	Double swivel elbow 15M-22M/15F	4		Non return valve	6
	Single silicone tube Adult 1.2m	4		Oxygen flush valve	7
	Single silicone tube Paediatric 1.2m	4		Metal tray	7
<b>Ventilator</b>	Control panel battery	4		Pin index to bull nose oxygen connector	7
				Oxygen cylinder bullnose pressure regulator	7
<b>Concentrator</b>	Oxygen concentrator 8lpm configured for use with Glostavent	4		Expiratory valve	7
	HEPA Filter Oxygen and Air for 8lpm concentrator	4		Oxygen hose 2m	7
	Solenoid valve for 8lpm oxygen concentrator	5		Male connector	7
	Foam filter 8lpm oxygen concentrator	5		Female connector	7
	Compressor service kit for 8lpm oxygen concentrator	5		Black block connector 22M x 22F	7
	Heat Exchanger for 8lpm oxygen concentrator	5			
	Control circuit board for 8lpm oxygen concentrator	5			
	Muffler for 8lpm Oxygen concentrator	5			
	Capacitor for 8lpm oxygen concentrator	5			
	Sieve beds for 8lpm oxygen concentrator	5			

## Contact information

**Diamedica (UK) Limited**  
 Grange Hill Industrial Estate  
 Bratton Fleming  
 Barnstaple  
 Devon EX31 4UH  
 United Kingdom

**Tel:** +44 (0)1598 710066  
**Fax:** +44 (0)1598 710055  
**Email:** [info@diamedica.co.uk](mailto:info@diamedica.co.uk)  
**Web:** [www.diamedica.co.uk](http://www.diamedica.co.uk)

### Technical Support:

**Email:** [support@diamedica.co.uk](mailto:support@diamedica.co.uk)

**WhatsApp:** +44 (0)7716 503156

# ECO2 spare parts

## Patient Circuit ▶



0.5 litre reservoir bag

Code: 2805000

Units: 1



1 litre reservoir bag

Code: 2810000

Units: 1



2 litre reservoir bag

Code: 2820000

Units: 1



30mm blue tubing 3m length

Code: 1570000B

Units: 1



Straight connector 22F - 15M

Code: 1962000

Units: 1



Ayres T piece paediatric circuit

Code: 2120000

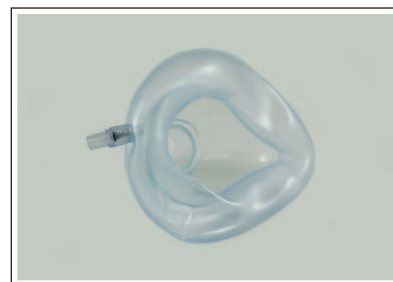
Units: 1



Adult mask

Code: 038-071-AM

Units: 1



Paediatric mask

Code: 038-071-PM

Units: 1



Adult patient circuit  
(2 x tubes and Y piece)

Code: SDCL-A

Units: 1



Paediatric patient circuit  
(2 x tubes and Y piece)

Code: SDCL-P

Units: 1



Straight connector 22M x 22M

Code: 1960000

Units: 1



Tee connector 22M x 22M x 22F

Code: 1982000

Units: 1



One way valve 22M x 22F

Code: 1921000

Units: 1



Tube and mask Oxygen set

Code: 1103-1576

Units: 1

# ECO2 spare parts



Adult Y piece for circuit

Code: 9117000      Units: 1



Paediatric Y piece for circuit

Code: 9123000      Units: 1



Paediatric self-inflating bag

Code: 038-72-840-H      Units: 1



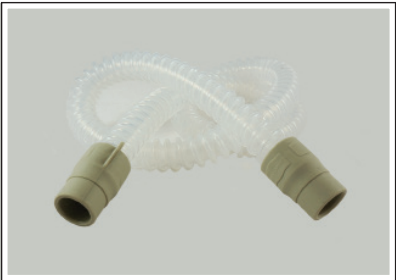
Adult self-inflating bag

Code: 038-71-840-H      Units: 1



Double swivel elbow 15M-22M/15F

Code: 1897 000      Units: 1



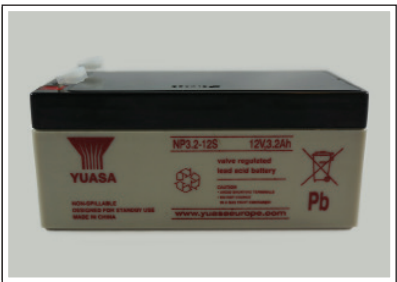
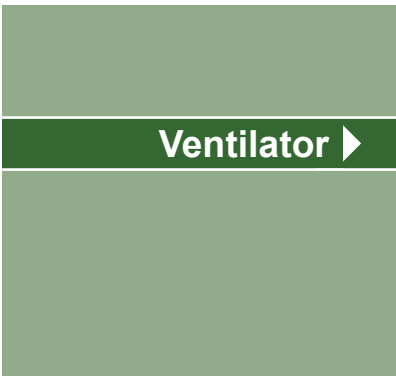
Single silicone tube adult 1.2m

Code: 38006      Units: 1



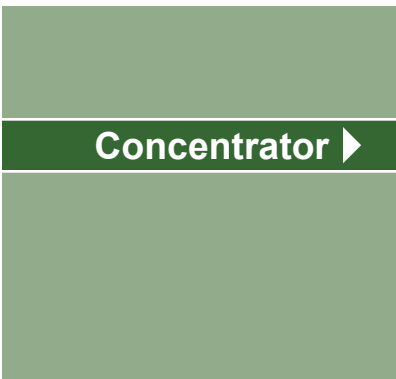
Single silicone tube Paediatric 1.2m

Code: 38045      Units: 1



Control panel battery

Code: 537-5472      Units: 1



Oxygen concentrator 8lpm configured for use with Glostavent

Code: AS094-10-MGV      Units: 1



HEPA Filter for Oxygen and Air for 8lpm concentrator

Code: FH5581      Units: 1

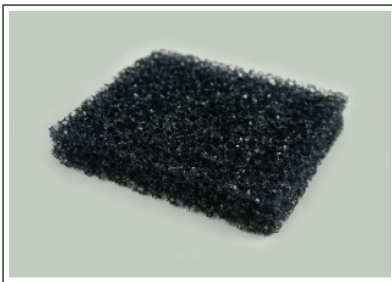
# ECO2 spare parts



Solenoid Valve for 8lpm oxygen concentrator

Code: VA001-2

Units: 1



Foam filter 8lpm oxygen concentrator

Code: FI002-1

Units: 1



Compressor service kit for 8lpm oxygen concentrator

Code: CO012-11

Units: 1



Heat Exchanger for 8lpm Oxygen concentrator

Code: HX002-2-MOD

Units: 1



Control circuit board for 8lpm Oxygen concentrator

Code: CB154-4

Units: 1



Muffler for 8lpm Oxygen concentrator

Code: MU043-2S

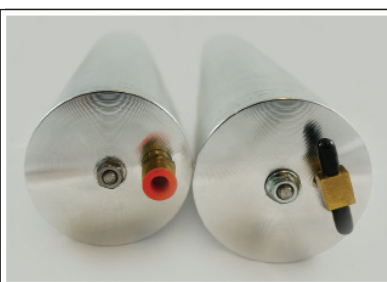
Units: 1



Capacitor for 8lpm oxygen concentrator

Code: CC012-9

Units: 1



Sieve beds for 8lpm oxygen concentrator

Code: BE157-1S Units: 1 Pair



Vaporiser ▶



Mini funnel for vaporiser

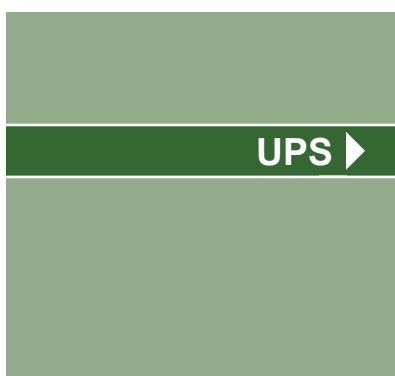
Code: 5060021831255 Units: 1



Vaporiser service kit

Code: 3400

Units: 1



UPS ▶



Replacement UPS

Code: B400-010-07A

Units: 1



Replacement batteries for the UPS

Code: RBS/UPS

Units: 3

# ECO2 spare parts



Replacement UPS mains cable  
UK plug

Code: 42 3287

Units: 1



Replacement UPS mains lead  
EU plug

Code: 42 0563

Units: 1



This partition has been  
left blank deliberately

## General spares ▶



Water trap

Code: 398 9091-MOD

Units: 1



6mm clear length tubing 1m

Code: 686-2680-A

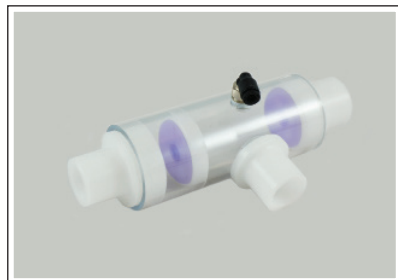
Units: 1



6mm black length tubing 1m

Code: 721-4007-A

Units: 1



Inspiratory valve

Code: PCV IN

Units: 1



Over pressure valve

Code: OPV/001

Units: 1



Air regulator

Code: 435-9609-MOD

Units: 1



External Air regulator

Code: AR20-F01B-B

Units: 1



Air flowmeter

Code: FL-2040-A

Units: 1



Oxygen flowmeter

Code: FL-2040-O

Units: 1



Flowmeter flow regulator

Code: 492-8570

Units: 1



Non return valve

Code: 367-0624

Units: 1

ECO2 spare parts



Oxygen flush valve

Code: VM130/VM30      Units: 1



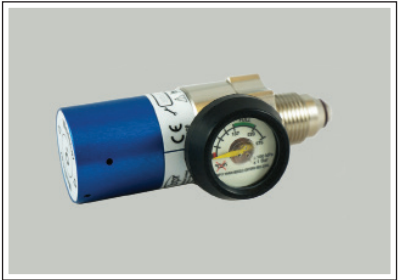
Metal tray

Code: GN14-65      Units: 1



Pin index to bull nose oxygen connector

Code: PIC-BN-AD      Units: 1



Oxygen cylinder bullnose pressure regulator

Code: 819-0017      Units: 1



Expiratory valve

Code: PCV EX      Units: 1



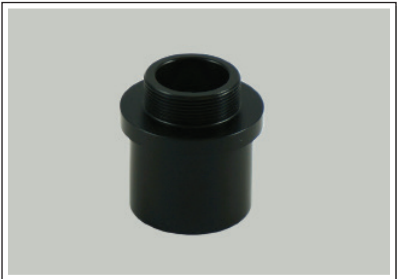
Oxygen hose 2m

Code: OXY-A/SH-A      Units: 1



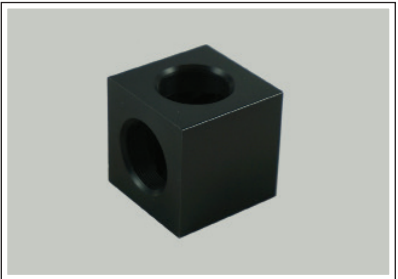
Male connector

Code: M Connector      Units: 1



Female connector

Code: F Connector      Units: 1



22M x 22F Black block connector

Code: CP003      Units: 1



This partition has been left blank deliberately



This partition has been left blank deliberately



This partition has been left blank deliberately



This partition has been left blank deliberately



This partition has been left blank deliberately



This partition has been left blank deliberately